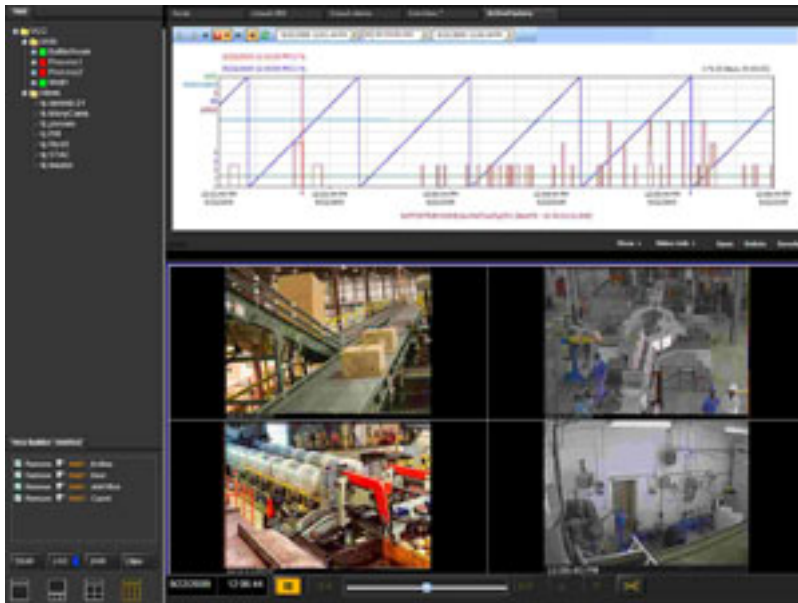


## Be A Video Historian



**Longwatch, Inc.** (Norwood, MA), developer of the Video Historian for Video MES applications, has announced support of the Wonderware ActiveFactory trend chart object. This allows users to link plant video directly to Wonderware's graphical data trends charts automatically. The Longwatch Video Engine collects video from multiple cameras throughout the plant, which can be transmitted to the control room HMI over standard IT or industrial networks. By integrating the Wonderware ActiveFactory trend chart object, the Video Historian shows trend graphs of user-selected variables. The video panel and trend chart can be linked, so that the video and timeline are in synchronization.

To see more information, visit [www.longwatch.com](http://www.longwatch.com) [1].

**Source URL (retrieved on 03/07/2015 - 12:02am):**

<http://www.impomag.com/products/2009/11/be-video-historian>

### Links:

[1] <http://www.longwatch.com/>